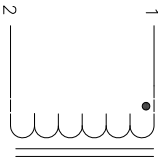


DIMENSIONAL TOLERANCE INCHES (MM)					REVISION HISTORY				
A	B	C	D (X2)	E (Ø DIM)	P	REV	ECN	DESCRIPTION	SIGN & DATE
Max	Max	Max	Max	Typ	Typ	A		PRODUCTION RELEASE	BY DATE CHK DATE
3.03 [77.00]	3.35 [85.00]	2.05 [52.00]	0.16 [4.00]	0.20 [5.00]	1.65 [42.00]	B		ADDED MATERIAL P/N AND SPEC.	TN 03/13/2020 JL 03/13/2020 TN 03/18/2020 JL 03/18/2020



SCHEMATIC

9 BUILT TO RoHS COMPLIANCE.

8 IF APPLICABLE, LABEL PART NUMBER AND REVISION
VARNISH PART AND CURE

7 APPLY EPOXY BETWEEN COIL AND BASE AS SHOWN
POSITION LEADS AS REQUIRED
REMOVE WIRES INSULATION AND TIN.

INSERTING THEM TO THE BASE.

6 THE START AND FINISH LEADS BEFORE
INSERT 1.5 TURNS OF HIGH TEMP. SLEEVING ON
TWIST WIRES INTO BUNDLE AND WIND COILS EVENLY SPACED
CONSTRUCTION:

4 WEIGHT: 635 GRAMS (SPEC.: < 2 LBS)

HI-POT WINDING-TO-CORE 1500 VAC, 10 SEC
INTERWINDING CAPACITANCE = 14.3pF TYP @ SRF
|Z| = 12.6 KILLO-OHMS TYP @ SRF
DCR = 10mΩ MAX
SRF = 4.65MHz TYPICAL

MAX TEMP. RISE @ IDC 82 AMP, 100°C WITH FORCE AIR COOLING.

INDUCTOR DC BIAS: SEE TABLE ON THE RIGHT

INDUCTANCE @ 0 AMP = 70uH±10%

TEST FREQUENCY: 10.0 kHz ; TEST VOLTAGE: 1Vrms; 0ADC

RATED MAX. CURRENT = 82 AMPS RMS

OPERATING TEMPERATURE RANGE : -20°C TO 50°C

STORAGE TEMPERATURE RANGE: -30°C TO 70°C

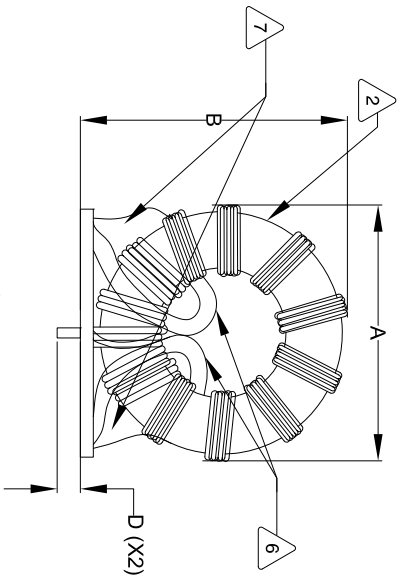
3 SPECIFICATIONS @ 25°C:

2 CORE: HIGH TEMP POWDERED CORE

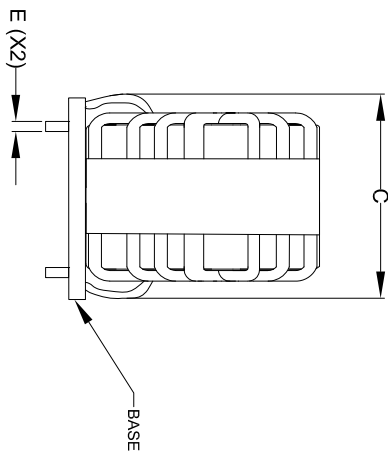
VARNISH BC-346A OR EQUIVALENT
EPOXY: 3M 2216 GRAY AB OR EQUIVALENT.
HIGH TEMP. SLEEVING: DELFINGEN INC., NU-SLEEVE SG-200
BASE MATERIAL: GAROLITE, G-10/FR4,
RATING UL-CLASS H (180°C) REQUIRED
MATERIAL: UL RECOGNIZED FLAMMABILITY

NOTES: UNLESS OTHERWISE SPECIFIED, READ NOTES FROM BOTTOM TO UP.

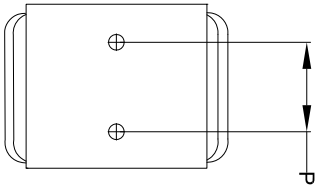
CAGE CODE: 5DME2



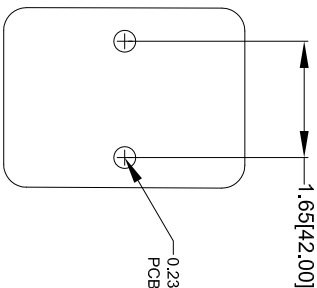
FRONT VIEW



SIDE VIEW



BOTTOM VIEW



**RECOMMENDED MOUNTING HOLE PATTERN
AND PCB HOLES (TOP VIEW)**

DC BIAS TABLE

DC BIAS AMP DC	INDUCTANCE @10KHz (TYP)
0	76.4uH
5	76.0uH
10	75.5uH
15	74.9uH
20	73.0uH
30	71.5uH
40	68.6uH
50	63.5uH
60	59.2uH
70	54.5uH
82	48.8uH

AUTOCAD SOLIDWORKS		www.coilws.com		CWS Coil Winding Specialist	
SIGN	DATE	sales@coilws.com		353 West Grove Ave	
DRAWN TN	03/13/2020			Orange, California 92865 (CAGE 5DME2)	
CHECKED JL	03/13/2020	TITLE: HIGH FREQUENCY INDUCTOR			
ENGR. JL	03/13/2020	70uH, 82Amp, Vertical Mount			
APPR. JL	03/13/2020	SIZE DWG. NO. CWS-1HF-12959			
DO NOT SCALE DRAWING		SCALE N/A		SHEET 1 OF 1	